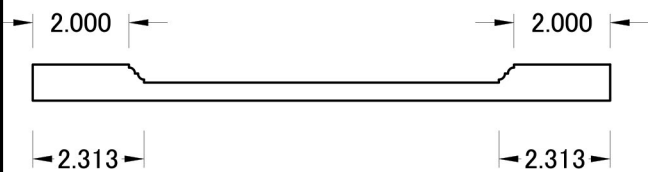


Standard Rail

Reduced Rail



## NOTE:

- \*The Standard Rail is 2.313" (see drawing).
- \*Profile Width is 0.313" (see drawing).
- \*Please Note that our rail is to the inside of the profile.
- \*Custom Rail Width Available.
- \*Available in Single Light.
- \*Multi-Panel Available.
- \*Arched Panel Available.
- \*Outside Edge profile are Available on this Door.
- \*Standard  $\frac{3}{4}$  " White Back, Option RAW MDF.
- \*Available in  $1\frac{1}{2}$  " thick RAW MDF.

## \*Drawer Options Available :

- X Flat Slab.
- Y Reduced Rail. (See Drawing)
- Z Standard Rail. (See Drawing)

Drawer Front Less than  $4\frac{1}{8}$ " High  
&  $6\frac{1}{2}$ " Wide will be a Slab Drawer.

