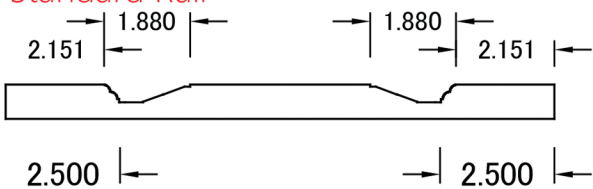


Standard Rail



Reduced Rail

NOTE:

- *The Standard Rail is 2.500" (see drawing).
- *Profile Width is 1.880" (see drawing).
- *Please Note that our rail is to the inside of the profile.
- *Custom Rail Width Available.
- *Available in Single Light.
- *Multi-Panel Available.
- *Arched Panel Available.
- *Outside Edge profile are Available on this Door.
- *Standard $\frac{3}{4}$ " White Back, Option RAW MDF.
- *Available in $1\frac{1}{2}$ " thick RAW MDF.

*Drawer Options Available :

- X Flat Slab.
- Y Reduced Rail. (See Drawing)
- Z Standard Rail. (See Drawing)

Drawer Front Less than $4\frac{1}{2}$ " High & $5\frac{7}{8}$ " Wide will be a Slab Drawer.

